

HOUSE AND LAND PACKAGE

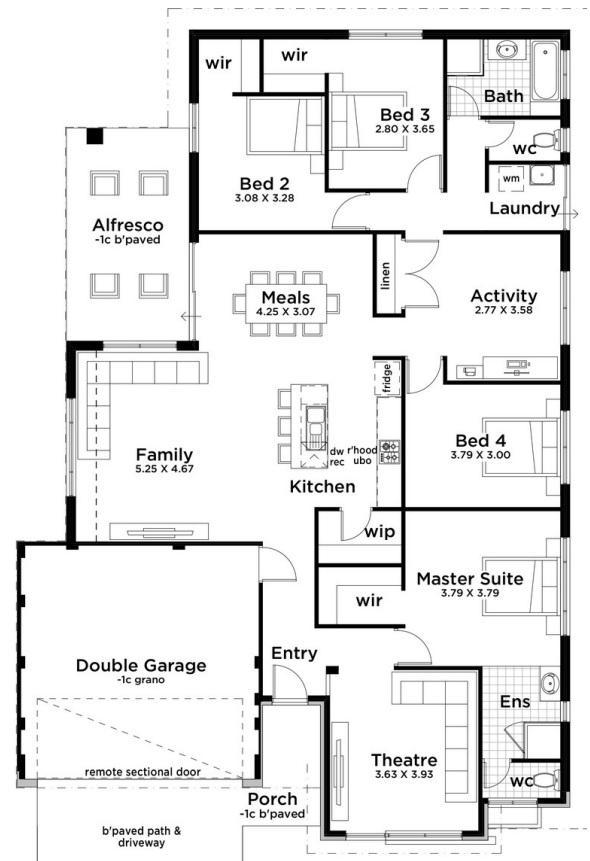


Lot 392 Waterford Way, Kingston 6233

This 4x2 Home design features:

- Master Suite with Huge Walk-in-robe & Ensuite
- Large Walk-in-Pantry & Central island bench
- Modern open plan living with a large Alfresco
- Flooring coverings and Window treatments throughout
- Reverse cycle Air conditioning
- Large Separate Home Theatre
- Internal paint included
- Full Boundary Fencing & Front landscaping
- 6 Front Elevations to choose from

From \$385,790



**Call Sarah Lloyd
0411420538**

Aussie Living Homes, Builder Registration Number 10805 is part of Ventura Home Group Pty Ltd. Aussie Living Homes is not the owner of the land and cannot guarantee its price or availability. Aussie Living Homes has been authorised by the landowner to advertise the land as being available at the purchase price specified. The price advertised is an estimate of the costs to build with Aussie Living Homes and separately purchase the underlying land from the owner of the land. The estimated price is therefore subject to change once all site works plans are completed and the current market value of the land and other relevant costs are taken into consideration. The elevation and images depicted in this advertisement are solely for illustrative purposes and are based on display homes, and may include features not included in our standard building contracts. The information and estimated pricing is correct at the time of printing, but subject to change without notice. Please read our terms and conditions on our website <http://www.aussielivinghomes.com.au/HouseandLandDisclaimer> for further details


aussie
LIVING HOMES
Making it possible